



## Alcohol and Entertainment Licensing Sub-Committee

**Monday 14 March 2022 at 2.00 pm**

This will be held as an online virtual Meeting

Details on how to access the link in order to view the meeting will be made available online via the following link: [HERE](#)

### Membership:

#### Members

Councillors:

Long (Chair)

Ahmed

Hylton

#### Substitute Members

Councillors:

Chohan, Denselow, Grahl, Hector, McLeish, Maurice,  
Shahzad

**For further information contact:** Devbai Bhanji, Governance Assistant  
Tel: 020 8937 6841; Email: [devbai.bhanji@brent.gov.uk](mailto:devbai.bhanji@brent.gov.uk)

For electronic copies of minutes, reports and agendas, and to be alerted when the minutes of this meeting have been published visit:

**[www.brent.gov.uk/committees](http://www.brent.gov.uk/committees)**

**The press and public are welcome to attend this meeting as an online virtual meeting. The link to view the meeting will be made available via the following link: [HERE](#)**

### **Notes for Members - Declarations of Interest:**

If a Member is aware they have a Disclosable Pecuniary Interest\* in an item of business, they must declare its existence and nature at the start of the meeting or when it becomes apparent and must leave the room without participating in discussion of the item.

If a Member is aware they have a Personal Interest\*\* in an item of business, they must declare its existence and nature at the start of the meeting or when it becomes apparent.

If the Personal Interest is also significant enough to affect your judgement of a public interest and either it affects a financial position or relates to a regulatory matter then after disclosing the interest to the meeting the Member must leave the room without participating in discussion of the item, except that they may first make representations, answer questions or give evidence relating to the matter, provided that the public are allowed to attend the meeting for those purposes.

### **\*Disclosable Pecuniary Interests:**

- (a) **Employment, etc.** - Any employment, office, trade, profession or vocation carried on for profit gain.
- (b) **Sponsorship** - Any payment or other financial benefit in respect of expenses in carrying out duties as a member, or of election; including from a trade union.
- (c) **Contracts** - Any current contract for goods, services or works, between the Councillors or their partner (or a body in which one has a beneficial interest) and the council.
- (d) **Land** - Any beneficial interest in land which is within the council's area.
- (e) **Licences** - Any licence to occupy land in the council's area for a month or longer.
- (f) **Corporate tenancies** - Any tenancy between the council and a body in which the Councillor or their partner have a beneficial interest.
- (g) **Securities** - Any beneficial interest in securities of a body which has a place of business or land in the council's area, if the total nominal value of the securities exceeds £25,000 or one hundredth of the total issued share capital of that body or of any one class of its issued share capital.

### **\*\*Personal Interests:**

The business relates to or affects:

- (a) Anybody of which you are a member or in a position of general control or management, and:
    - To which you are appointed by the council;
    - which exercises functions of a public nature;
    - which is directed is to charitable purposes;
    - whose principal purposes include the influence of public opinion or policy (including a political party or trade union).
  - (b) The interests of a person from whom you have received gifts or hospitality of at least £50 as a member in the municipal year;
- or

A decision in relation to that business might reasonably be regarded as affecting the well-being or financial position of:

- You yourself;
- a member of your family or your friend or any person with whom you have a close association or any person or body who is the subject of a registrable personal interest.

# Agenda

Introductions, if appropriate.

Item	Page
1	<b>Apologies for absence and clarification of alternate members</b>
2	<b>Declarations of Interests</b>
	Members are invited to declare at this stage of the meeting, the nature and existence of any relevant disclosable pecuniary or personal interests in the items on this agenda and to specify the item(s) to which they relate.
3	<b>Application for a New Premises Licence by Mr Adam McKenna for the premises known as Cedar Restaurant, 58 College Road, NW10 5ET, pursuant to the provisions of the Licensing Act 2003</b> 1 - 32

**Date of the next meeting:** 21 March 2022 @ 10.00am



Please remember to ***SWITCH OFF*** your mobile phone during the meeting.

This page is intentionally left blank

## LICENSING ACT 2003

### Application for New Premises Licence

#### 1. The Application

Name of Applicant:	Mr Adam McKenna
Name & Address of Premises:	Cedar Restaurant, 58 College Road, NW10 5ET
Applicants Agent:	NWL Solicitors – Mr Spyridon Leoussis

The application is for a new premises licence:

- 1 For the sale and supply of alcohol from 11am to 10.30pm and to remain open from 8am to 11pm Monday to Sunday.

#### 2. Background

None

#### 3. Promotion of the Licensing Objectives

See page 12 of the application

#### 4. Relevant Representations

Representations were received and withdrawn from the Police and Licensing Officers. Representations remain outstanding from a local resident.

#### 5. Interested Parties

None

#### 6. Policy Considerations

##### Policy 1 – Process for Applications

Conditions on the licence, additional to those voluntarily sought/agreed by the applicant, may be considered. Conditions will focus on matters which are within the control of individual licensee and which relate to the premises or areas being used for licensable activities, the potential impact of the resulting activities in the vicinity. If situations arise where the licensing objectives may be undermined but cannot be dealt with by the use of appropriate conditions the Licensing Authority will consider whether it is appropriate for a licence to be granted or continue to operate.

## **7. Determination of the Application**

Members can take the following steps when determining a new premises licence application:

- grant the licence;
- exclude from the scope of the licence any of the licensable activities to which the application relates;
- refuse to specify a person in the licence as the premises supervisor;
- reject the application

## **8. Associated Papers**

- A. Application Form & Plan
- B. Licensing Representation & withdrawal
- C. Police Representation & withdrawal
- D. Resident Representation
- E. OS Map

General Details												
Licence Type	Premises Licence											
Application Type	New Premises Application											
Fees	<table border="1"> <thead> <tr> <th>Type</th> <th>Detail</th> <th>Total</th> </tr> </thead> <tbody> <tr> <td>Non-Domestic Rateable Value</td> <td>Rateable value £4301 to £33,000</td> <td>£190.00</td> </tr> <tr> <td>Capacity of Premises</td> <td>0 to 4,999</td> <td>£0.00</td> </tr> </tbody> </table>			Type	Detail	Total	Non-Domestic Rateable Value	Rateable value £4301 to £33,000	£190.00	Capacity of Premises	0 to 4,999	£0.00
Type	Detail	Total										
Non-Domestic Rateable Value	Rateable value £4301 to £33,000	£190.00										
Capacity of Premises	0 to 4,999	£0.00										
Total Fee(s)	£190.00											
Location to be Licenced	58 College Road London Brent NW10 5ET											
Trading Name	Cedar Restaurant											
I am the	Agent											
Agent Details	Mr Spyridon Leoussis NWL Solicitors Ground Floor Unit, 9 Hampstead West 224 Iverson Road London NW6 2HL Tel: [REDACTED] Mob: [REDACTED] Email: [REDACTED]											
Proposed Licence Holder Details	Mr Adam Mckenna [REDACTED] [REDACTED] [REDACTED] Tel: [REDACTED] [REDACTED] Email: [REDACTED]											
Additional Proposed Licence Holder(s)												
Additional Contacts												
Licence Type Additional Data Setting												
Telephone Number at premises if any												
Non domestic rateable value	9200											
I am 18 years old or over	Yes											
When do you want the premises licence to start	18-01-2022											
If you wish the licence to be valid only for a limited period when do you want it to end												
I have read the guidance on Plays	No											
Will you be showing plays on a Monday?	No											
Will you be showing plays on a Tuesday?	No											

Will you be showing plays on a Wednesday?	No
Will you be showing plays on a Thursday?	No
Will you be showing plays on a Friday?	No
Will you be showing plays on a Saturday?	No
Will you be showing plays on a Sunday?	No
I have read the guidance on Films	No
Will you be showing films on a Monday?	No
Will you be showing films on a Tuesday?	No
Will you be showing films on a Wednesday?	No
Will you be showing films on a Thursday?	No
Will you be showing films on a Friday?	No
Will you be showing films on a Saturday?	No
Will you be showing films on a Sunday?	No
I have read the guidance on Indoor sporting events	No
Will you be carrying out indoor sporting events on a Monday?	No
Will you be carrying out indoor sporting events on a Tuesday?	No
Will you be carrying out indoor sporting events on a Wednesday?	No
Will you be carrying out indoor sporting events on a Thursday?	No
Will you be carrying out indoor sporting events on a Friday?	No
Will you be carrying out indoor sporting events on a Saturday?	No
Will you be carrying out indoor sporting events on a Sunday?	No
I have read the guidance on boxing or wrestling entertainment	No
Will you be carrying out boxing or wrestling entertainment on a Monday?	No
Will you be carrying out	Page 4

boxing or wrestling entertainment on a Tuesday?	No
Will you be carrying out boxing or wrestling entertainment on a Wednesday?	No
Will you be carrying out boxing or wrestling entertainment on a Thursday?	No
Will you be carrying out boxing or wrestling entertainment on a Friday?	No
Will you be carrying out boxing or wrestling entertainment on a Saturday?	No
Will you be carrying out boxing or wrestling entertainment on a Sunday?	No
I have read the guidance on live music	No
Will you be carrying out live music on a Monday?	No
Will you be carrying out live music on a Tuesday?	No
Will you be carrying out live music on a Wednesday?	No
Will you be carrying out live music on a Thursday?	No
Will you be carrying out live music on a Friday?	No
Will you be carrying out live music on a Saturday?	No
Will you be carrying out live music on a Sunday?	No
I have read the guidance on recorded music	No
Will you be carrying out recorded music on a Monday?	No
Will you be carrying out recorded music on a Tuesday?	No
Will you be carrying out recorded music on a Wednesday?	No
Will you be carrying out recorded music on a Thursday?	No
Will you be carrying out recorded music on a Friday?	No
Will you be carrying out recorded music on a Saturday?	No
Will you be carrying out recorded music on a Sunday?	No

I have read the guidance on performances of dance	No
Will you be carrying out performances of dance on a Monday?	No
Will you be carrying out performances of dance on a Tuesday?	No
Will you be carrying out performances of dance on a Wednesday?	No
Will you be carrying out performances of dance on a Thursday?	No
Will you be carrying out performances of dance on a Friday?	No
Will you be carrying out performances of dance on a Saturday?	No
Will you be carrying out performances of dance on a Sunday?	No
I have read the guidance on anything of a similar description to that falling within live music, recorded music or performances of dance	No
Will you be carrying out anything of a similar description to that falling within live music, recorded music or performances of dance on a Monday?	No
Will you be carrying out anything of a similar description to that falling within live music, recorded music or performances of dance on a Tuesday?	No
Will you be carrying out anything of a similar description to that falling within live music, recorded music or performances of dance on a Wednesday?	No
Will you be carrying out anything of a similar description to that falling within live music, recorded music or performances of dance on a Thursday?	No
Will you be carrying out anything of a similar description to that falling within live music, recorded music or performances of dance on a	No

Friday?	
Will you be carrying out anything of a similar description to that falling within live music, recorded music or performances of dance on a Saturday?	No
Will you be carrying out anything of a similar description to that falling within live music, recorded music or performances of dance on a Sunday?	No
I have read the guidance on Provision of late night refreshment	No
Will you be offering the Provision of late night refreshment on a Monday?	No
Will you be offering the Provision of late night refreshment on a Tuesday?	No
Will you be offering the Provision of late night refreshment on a Wednesday?	No
Will you be offering the Provision of late night refreshment on a Thursday?	No
Will you be offering the Provision of late night refreshment on a Friday?	No
Will you be offering the Provision of late night refreshment on a Saturday?	No
Will you be offering the Provision of late night refreshment on a Sunday?	No
I have read the guidance on the Sale of alcohol	Yes
Will you be offering the Sale of alcohol on a Monday?	Yes
Will you be offering the Sale of alcohol on a Tuesday?	Yes
Will you be offering the Sale of alcohol on a Wednesday?	Yes
Will you be offering the Sale of alcohol on a Thursday?	Yes
Will you be offering the Sale of alcohol on a Friday?	Yes
Will you be offering the Sale of alcohol on a Saturday?	Yes
Will you be offering the Sale of alcohol on a Sunday?	Yes

Please confirm if your premises supervisor has a personal licence	Yes
Do you intend to be open on a Monday?	Yes
Do you intend to be open on a Tuesday?	Yes
Do you intend to be open on a Wednesday?	Yes
Do you intend to be open on a Thursday?	Yes
Do you intend to be open on a Friday?	Yes
Do you intend to be open on a Saturday?	Yes
Do you intend to be open on a Sunday?	Yes
I have filled in all of my opening hours	Yes
Premise Alcohol Licence	
If 5000 or more people are expected to attend the premises at any one time please state the number expected to attend	
Please give a general description of the premises	The premises is a Lebanese restaurant.
Do you intend to show Plays	No
Will the performance of a play take place indoors or outdoors or both	
Monday Start	
Monday End	
Tuesday Start	
Tuesday End	
Wednesday Start	
Wednesday End	
Thursday Start	
Thursday End	
Friday Start	
Friday End	
Saturday Start	
Saturday End	
Sunday Start	
Sunday End	
Plays further details	
Plays seasonal variations	
Plays Non standard timings	
Will you be showing Films	No
Films Licence Location	

Monday Start	
Monday End	
Tuesday Start	
Tuesday End	
Wednesday Start	
Wednesday End	
Thursday Start	
Thursday End	
Friday Start	
Friday End	
Saturday Start	
Saturday End	
Sunday Start	
Sunday End	
Films Further Details	
Films Seasonal Variations	
Films Non Standard Times	
Will you be carrying out Indoor Sporting Events	No
Monday Start	
Monday End	
Tuesday Start	
Tuesday End	
Wednesday Start	
Wednesday End	
Thursday Start	
Thursday End	
Friday Start	
Friday End	
Saturday Start	
Saturday End	
Sunday Start	
Sunday End	
Indoor Sporting Events Further Details	
Indoor Sporting Events Seasonal Variations	
Indoor Sporting Events Non Standard Times	
Will you be carrying out Boxing Or Wrestling Entertainment	No
Will the Boxing Or Wrestling Entertainment take place indoors or outdoors or both	
Monday Start	
Monday End	Page 9

Tuesday Start	
Tuesday End	
Wednesday Start	
Wednesday End	
Thursday Start	
Thursday End	
Friday Start	
Friday End	
Saturday Start	
Saturday End	
Sunday Start	
Sunday End	
Boxing Or Wrestling Entertainment Further Details	
Boxing Or Wrestling Entertainment Seasonal Variations	
Boxing Or Wrestling Entertainment Non Standard Times	
Will you be carrying out Live Music	No
Will the performance of Live Music take place indoors or outdoors or both	
Monday Start	
Monday End	
Tuesday Start	
Tuesday End	
Wednesday Start	
Wednesday End	
Thursday Start	
Thursday End	
Friday Start	
Friday End	
Saturday Start	
Saturday End	
Sunday Start	
Sunday End	
Live Music Further Details	
Live Music Seasonal Variations	
Live Music Non Standard Times	
Will you be carrying out Recorded Music	No
Recorded Music Licence Location	Indoors

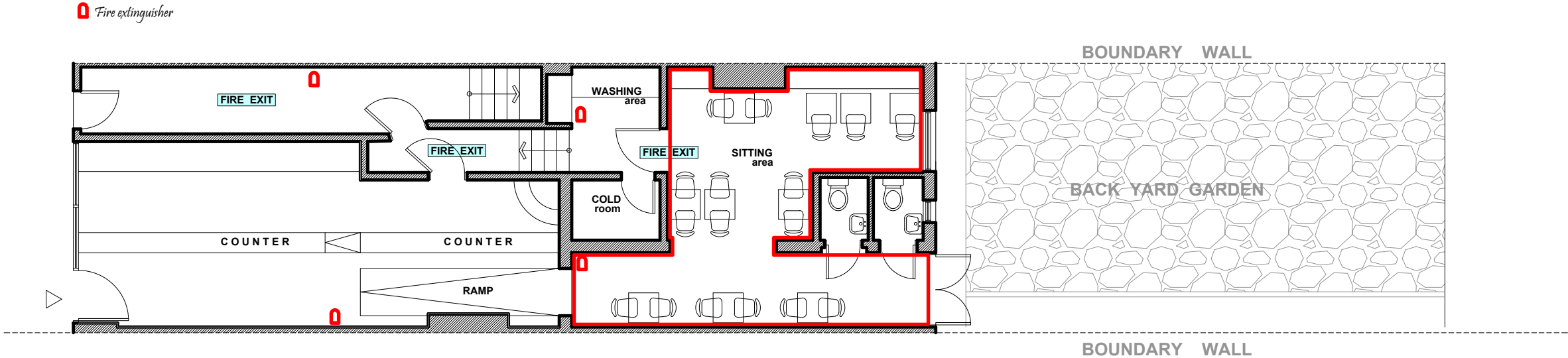
Monday Start	
Monday End	
Tuesday Start	
Tuesday End	
Wednesday Start	
Wednesday End	
Thursday Start	
Thursday End	
Friday Start	
Friday End	
Saturday Start	
Saturday End	
Sunday Start	
Sunday End	
Recorded Music Further Details	
Recorded Music Seasonal Variations	
Recorded Music Non Standard Times	
Will you be carrying out Performance Of Dance	No
Performance Of Dance Licence Location	
Monday Start	
Monday End	
Tuesday Start	
Tuesday End	
Wednesday Start	
Wednesday End	
Thursday Start	
Thursday End	
Friday Start	
Friday End	
Saturday Start	
Saturday End	
Sunday Start	
Sunday End	
Performance Of Dance Further Details	
Performance Of Dance Seasonal Variations	
Performance Of Dance Non Standard Times	
Will you be providing Anything of a similar description to that falling within Live or Recorded Music or Performance of	No

Dance	
Please give a description of the type of entertainment you will be providing	
Will this entertainment take place indoors or outdoors or both	
Monday Start	
Monday End	
Tuesday Start	
Tuesday End	
Wednesday Start	
Wednesday End	
Thursday Start	
Thursday End	
Friday Start	
Friday End	
Saturday Start	
Saturday End	
Sunday Start	
Sunday End	
Other Standard Activities Further Details	
Other Standard Activities Seasonal Variations	
Other Standard Activities Non Standard Times	
Will you be offering the Provision of late night refreshment	No
Will the Provision of late night refreshment take place indoors or outdoors or both	
Monday Start	
Monday End	
Tuesday Start	
Tuesday End	
Wednesday Start	
Wednesday End	
Thursday Start	
Thursday End	
Friday Start	
Friday End	
Saturday Start	
Saturday End	
Sunday Start	
Sunday End	
Late Night Further Details	Page 12

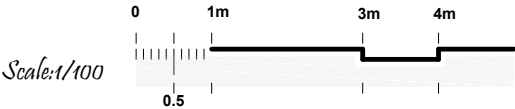
Late Night Seasonal Variations	
Late Night Non Standard Times	
Will you be offering the Supply Of Alcohol	Yes
Will the supply of alcohol be for consumption	On the premises
Monday Start	11:00
Monday End	22:30
Tuesday Start	11:00
Tuesday End	22:30
Wednesday Start	11:00
Wednesday End	22:30
Thursday Start	11:00
Thursday End	22:30
Friday Start	11:00
Friday End	22:30
Saturday Start	11:00
Saturday End	22:30
Sunday Start	11:00
Sunday End	22:30
Supply Of Alcohol Seasonal Variations	
Supply Of Alcohol Non Standard Times	
Concerns In Respect Of Children	None
Monday Opening	08:00
Monday Closing	23:00
Tuesday Opening	08:00
Tuesday Closing	23:00
Wednesday Opening	08:00
Wednesday Closing	23:00
Thursday Opening	08:00
Thursday Closing	23:00
Friday Opening	08:00
Friday Closing	23:00
Saturday Opening	08:00
Saturday Closing	23:00
Sunday Opening	08:00
Sunday Closing	23:00
Opening Hours Seasonal Variations	
Opening Hours Non Standard Times	
	The designated premises supervisor and/or a senior manager shall be at the

a. General all four licensing objectives b c d e	premises during all opening hours to ensure that all four licencing objectives are strictly adhered to. This is the same policy across the chain's existing 3 other restaurants/takeaway shops and a high standard of service, safety and neighbourhood friendship and mindfulness is always maintained.
b. The prevention of crime and disorder	CCTV shall be installed to Home Office Guidance standards and maintained in a good working condition and recordings shall be kept for 31 days and shall be made available to police and authorised Officers from Brent Council.
c. Public safety	The locks and flush latches on the exit doors shall be unlocked and kept free from fastenings other than push bars or pads whilst the public are on the premises.
d. The prevention of public nuisance	Notices asking customers to leave quietly shall be conspicuously displayed at all exits.
e. Protection Of Children Description	A u201cChallenge 25u201d policy shall be adopted and adhered to at all times.
Personal Alcohol Licence Holder	
Personal Alcohol Licence	
Licence Number	
Contact	
Name	Adam Mckenna
Address	
Licenced By	
Dps	
Start Date	
Date of Birth	

Customer Comments:



GROUND FLOOR LAY-OUT PLAN



This page is intentionally left blank

21-02-22

It seems that if agreed, this proposal would facilitate a very substantial change from A5 takeaway from the front of the ground floor (back was used as storage and the garden used by tenants of the residential dwelling upstairs) to a fully operational restaurant with alcohol licence.

The side return, which would facilitate the use of the premises as a restaurant, is unlawful as no planning permission for this has been granted by the Council. From the submitted plan it seems that the main sitting area of the operational restaurant is proposed to be located at the back of the property with provision for 20 seats. If granted, the alcohol license will create an atmosphere where the alcohol will be served from 11 am until 10:30 pm every day of the week in a room which previously was used for storage. This will undoubtedly have a huge negative impact on our right to a quiet enjoyment of our property immediately adjacent to the proposed restaurant. It is noted that the plan accompanying the licence application does not include, within the red edging, the rear garden and I assume that this means that the rear garden does not form part of the application.

However, there is an access to the garden through the door on the plan, which means a strong possibility of the restaurant entertainment, music from 11 am to 11 pm, smoking and drinking spilling over to the garden. I understand that no noise pollution test is included in the application. The use of the rear garden of the premises in connection with the restaurant within the building, including the consumption of alcohol and the provision of entertainment (if, indeed, that is what is proposed), would be unacceptable due to the probable nuisance, noise, smoke pollution and general disturbance caused to adjacent residential properties, [REDACTED] and [REDACTED]. In view of the very close proximity of residential premises, any use of the rear garden of 58 College Road as a restaurant would be contrary to the licensing objective of preventing public nuisance (see sections 4(2)(c) and 46(a) of the Licensing Act 2003). As a resident, I object to the licence to be granted and would request a hearing at which I would like to have a chance to speak.

This page is intentionally left blank

21-02-22

The plan attached to the application has a red line around the seating area at the rear but is not annotated so it isn't clear. If it indicates that the sale and consumption of alcohol will be confined to this area, I do not object. If the red line indicates something else and the applicant intends to use the outside area for the sale or consumption of alcohol, I object. Allowing alcohol to be consumed outdoors, with the inevitable noise and disturbance, in the midst of gardens used by neighbours including young families, is not acceptable. There is no other business in the vicinity that has customers in a residential back garden. After normal trading hours College Road is very peaceful. Granting a licence for outdoor alcohol consumption would change the nature of, what is currently a harmonious mix of businesses and residents and would set a worrying precedent.

22-02-22

I would like to add to the comments I submitted previously. I am concerned about a licensed restaurant being in the rear of the building as it is right in the middle of residential gardens. On the plan, the back doors of the restaurant are shown open, which suggests that customers will have access to the garden. The previous lessees of the property operated a take away from the front only and the back of the property was for employees and upstairs residents only. Granting an entertainment licence to a rear facing sit down restaurant with garden access for customers will increase the likelihood of noise and disturbance to the outdoor spaces of neighbouring residents. If customers are not allowed to access the garden, I would support the license application.

This page is intentionally left blank

22-02-22

Dear Sir/Madam, As per my objections to the previous licence application at this address, I am particularly concerned about the potential use of the back garden area for customer seating and customers consuming food and drink outside, which seems to have been enabled by introducing a restaurant seating area at the back with connecting doors to the external area. As [REDACTED] neighbour with young children, I am particularly concerned about noise creating a nuisance, with our bedrooms facing to the back, but also when using our own garden during the day, particularly at weekends. Furthermore the separating wall between our garden and the restaurant's is below eye height and public access would enable anyone visiting the restaurant to look into our back garden. Combined with the potential for noise nuisance, swearing, but also smells etc. this would feel like a serious invasion of our privacy. Were the licence granted purely on the basis of seating on the street front, I would have no objections. Kind regards

This page is intentionally left blank

**Sent:** 22 February 2022 23:20

**To:** Business Licence <business.licence@brent.gov.uk>

**Subject:** Re: 23607 Alcohol and Entertainment Licensing

**Importance:** High

Dear Sir/Madame,

I would like to object to the issue of such license for the reasons of prevention of Public Nuisance and Protection of Children From Harm.

The application incorrectly states that within the red line there is a restaurant. As a matter of fact, the restaurant has never been in operation at the above address, and a small take-away shop was trading at the front of the building only. As the drawings indicate, the sitting for 20 with the sale of alcohol is being arranged at the rear of the property, which is not suitable for such use. This is because the proposed part of the building is neighbouring with several residential properties, some of which have young and very young children. If granted, the alcohol license will contribute further to creating an atmosphere where the alcohol will be served from 11 am until 10:30 pm every day of the week in a room which previously was used for storage. There are numerous openable windows and double doors facilitating access to the rear garden. This will undoubtedly have a huge negative impact on our right to a quiet enjoyment of our property immediately adjacent to the proposed licensed restaurant.

It must be noted the double doors into the rear garden of the premises are operational, as per submitted drawings. This is an indication that the noise produced by recorded music will constantly disturb the residents of adjoining properties 7 days a week from 11am-11pm. This would in-fact be unacceptable due to the probable nuisance, noise, smoke pollution and general disturbance caused to adjacent residential properties, including [REDACTED]. In view of the very close proximity of residential premises, any use of the rear of the property, including the recently constructed side return (unauthorised) and rear garden accessible through the doors, and four windows including roof windows (erroneously not indicated on the drawings) of 58 College Road as a licensable restaurant would be contrary to the licensing objective of preventing public nuisance (see sections 4(2)(c) and 46)(a) of the Licensing Act 2003).

As a resident, I object to the licence to be granted and would request a hearing at which I would like to have a chance to speak.

This page is intentionally left blank



**METROPOLITAN  
POLICE**

Working together for a safer London

## TERRITORIAL POLICING

### ***Brent Police Licensing Unit***

*Brent Civic Centre  
Engineers Way  
Wembley  
Middlesex  
HA9 0FJ*

### ***NW BCU Licensing Department - Brent***

*Harrow Police Station  
74, Northolt Road  
Harrow  
HA2 0DN*

***Tel:*** 020 8733 5008

***Email:***

*nwmailbox.licensingbrent@met.police.uk*

***Web:*** [www.met.police.uk](http://www.met.police.uk)

***Your Ref:*** 23607

***Our ref:*** 01QK/31/22/3302NW

***Date:*** 10<sup>th</sup> February 2022

**Police representations to the application for a new Premises Licence for Cedar Restaurant, 58 College Road, NW10 5ET.**

Police certify that we have considered the application shown above and wish to make representations that the likely effect of the grant of the application is detrimental to the Council's Licensing Objectives for the reasons indicated below.

Police are of the opinion that the risk to the Council's objectives can be mitigated by removing the requested variations or attaching conditions to the Licence as shown below. If these conditions were accepted in full, police would be in a position to withdraw their representations.

**Officer: Paul Scott  
Licensing Constable 3302NW**

An officer of the Metropolitan Police, in whose area the premises are situated, who is authorised for the purposes of exercising its statutory function as a 'Responsible Authority' under the Licensing Act 2003.

The application has been made for a new premises licence under Section 17 of the Licensing act 2003. The Police representations are concerned with all four of the licensing objectives.

**Police require the following points should be included in the operating schedule or added as conditions on the premises licence.**

### **Personal License Holder**

The sale of alcohol to drunken people and children is a major concern to Police and highlighted in the governments Alcohol Harm Reduction Strategy. Those who sell or provide

alcohol should be fully aware of the legislation and issues around alcohol and should be fully trained to a national standard.

### **Closed Circuit Television (CCTV)**

Good quality CCTV is a basic requirement to help deter and detect criminal activity for all reputable license holders. Therefore a decent quality CCTV system is an essential tool and should be installed and maintained in accordance with Home Office Guidance. The system should be fully operational during the hours of business, with a member of staff present who can operate and if required download footage upon request of the police or other recognised authority from Brent Council.

Notices will also be displayed advertising the presence of the CCTV to help promote a secure and safe dining and working environment.

### **Police require the following points should be added as conditions on the premises licence as below:**

1. CCTV shall be installed to Home Office Guidance standards and maintained in a good working condition and recordings shall be kept for 31 days and shall be made available to police and authorised Officers from Brent Council upon request.
2. CCTV cameras shall be installed to cover all the entrances and exits of the premises and further camera(s) installed to cover the take away section and the main restaurant.
3. A member of staff trained in the use of the CCTV system shall be available at the premise at all times that the premises are open to the public.
4. The CCTV system shall display on all recordings with the correct date and time of the recording.
5. The CCTV system shall be capable of obtaining clear facial recognition images and a clear head and shoulder image of every person entering or leaving the premises.
6. A "Challenge 25" policy shall be adopted and adhered to at all times.
7. A sign stating "No proof of age – No sale" shall be displayed at the point of sale.
8. A copy of the premises licence summary including the hours which licensable activities are permitted shall be visible from the outside of each entrance to the premises.
9. Notices asking customers to leave quietly from the premises shall be displayed by the Exit/entrance.
10. An incident and refusals log shall be kept at the premises and made available for inspection on request to an authorised officer of Brent Council or the Police, which will record the following;
  - a) Any complaints received.
  - b) Any incidents of disorder.

- c) Any faults in the CCTV system.
- d) Any refusal of the sale of alcohol.
- e) Any visit by a relevant authority or emergency service.

11. Regular documented staff training on licensing legislation and operating procedures shall be given. The training shall be signed and dated and a copy of these training records available for inspection by Police and local enforcement officers.

12. Alcohol shall only be provided as an accompaniment to a main meal.

13. The supply/sale of alcohol shall be by waiter or waitress service only.

14. Customers must not be allowed to sit, stand or be served from the bar area or any other staff area used for the preparation of alcoholic beverages.

15. The supply/sale of alcohol is for **on** premises only. There shall be no **off sale** of alcohol from this venue.

Yours Sincerely,

**PC Paul Scott 3302NW**  
**NW BCU - Brent Licensing**  
**Paul.Scott9@met.police.uk**

This page is intentionally left blank

**From:** Paul.Scott9@met.police.uk <Paul.Scott9@met.police.uk>  
**Sent:** 16 February 2022 10:59  
**To:** sleoussis@nwlsolicitors.co.uk  
**Cc:** Business Licence <business.licence@brent.gov.uk>; Legister, Linda <Linda.Legister@brent.gov.uk>; adammeckanna@gmail.com  
**Subject:** RE: Cedar Restaurant, NW10 5ET - 23607

Dear Sirs,

Please accept my apologies for the delay in replying.

Thank you for your email. I can confirm that police have now **withdrawn** their representations.

Kind regards,

Paul



**Paul Scott**  
**Police Constable 3302NW –**  
**Brent Licensing Officer**  
Mobile: 07500 993 897  
Harrow Police Station, 74,  
Northolt Road, Harrow, HA2  
ODN  
Web: [www.met.police.uk](http://www.met.police.uk)  
Email:  
[Paul.Scott9@met.police.uk](mailto:Paul.Scott9@met.police.uk)

GSC Marking: **OFFICIAL** and may be subject to handling instructions and/or an additional caveat

---

**From:** Spyridon Leoussis  
**Sent:** 11 February 2022 10:39  
**To:** Scott Paul - NW-CU ;  
**Cc:** [business.licence@brent.gov.uk](mailto:business.licence@brent.gov.uk); [Linda.Legister@brent.gov.uk](mailto:Linda.Legister@brent.gov.uk)  
**Subject:** RE: Cedar Restaurant, NW10 5ET - 23607

Dear Sirs,

The proposed conditions are accepted in full; please therefore withdraw your representations.

Kind regards,

**Spyridon Leoussis**  
Partner  
**NWL Solicitors**

This page is intentionally left blank

Spyridon Leousis  
NWL Solicitors  
Ground Floor Unit  
224 Iverson Road  
NW6 2HL

17<sup>th</sup> February 2022

Reference: 23607

Dear Mr Leoussis,

**Re: Licensing Representation to the Application for the New Premises Licence at Cedar Restaurant 58 College Road, London, NW10 5ET**

I certify that I have considered the above new application and I wish to make representations.

Officer: Esther Chan – Licensing Inspector

An officer of the Licensing Authority, in whose area the premises are situated, who is authorised for the purposes of exercising its statutory function as a 'Responsible Authority' under the Licensing Act 2003.

The application has been made for a new premises licence under section 17 of the Act.

The Licensing Authority representations are primarily concerned with the four licensing objectives;

- the prevention of crime and disorder;
- public safety;
- the prevention of public nuisance; and
- the protection of children from harm.

The Licensing Authority require the following points to be included in the operating schedule or added as conditions on the premises licence:

1. CCTV shall be installed to Home Office Guidance standards and maintained in a good working condition and recordings shall be kept for 31 days and shall be made available to police and authorised Officers from Brent Council.

2. The CCTV system shall be capable of obtaining clear facial recognition images and a clear head and shoulders image of every person entering or leaving the premises.
3. The CCTV images shall be kept in an easily downloadable format.
4. A member of staff trained in the use of the CCTV system shall be available at the premise at all times that the premises are open to the public.
5. CCTV camera shall be installed to cover the entrance of the premises and further cameras installed to cover the full interior of the premises.
6. A "Challenge 25" policy shall be adopted and adhered to at all times
7. A sign stating "No proof of age – No sale" shall be displayed at the point of sale.
8. A copy of the premises licence summary including the hours which licensable activities are permitted shall be visible from the outside of each entrance to the premises.
9. Notices asking customers to leave quietly shall be conspicuously displayed at all exits.
10. Regular documented staff training on licensing legislation and operating procedures shall be given. The training shall be signed and dated and a copy of these training records available for inspection by Police and local authority enforcement officers.
11. An incident log shall be kept at the premises, and made available for inspection on request to an authorised officer of Brent Council or the Police, which will record the following:
  - (a) all crimes reported to the venue
  - (b) all ejections of patrons
  - (c) any complaints received
  - (d) any incidents of disorder
  - (e) all seizures of drugs or offensive weapons
  - (f) any faults in the CCTV system
  - (g) any refusal of the sale of alcohol
  - (h) any visit by a relevant authority or emergency service.
12. Alcohol shall only be provided as an accompaniment to a main meal in the restaurant area as defined on the plans submitted to the licensing authority.
13. The supply/sale of alcohol shall be by waiter or waitress service.
14. Customers shall not be permitted to take any open drink containers outside the premises as defined on the plan (shaded in red) submitted to and approved by the Licensing Authority.
15. All deliveries shall take place during the normal working day (i.e. 09:00hrs to 20:00hrs daily).
16. Outside of the hours authorised for the sale of alcohol, all alcohol within the trading area is to be secured behind locked grills, locked screens or locked cabinet doors so as to prevent access to the alcohol by customers or staff.

In order for the Licensing Authority to withdraw this representation, it will be necessary for you to confirm that your client accept the above conditions in writing.

Yours sincerely,

A handwritten signature in black ink, appearing to read 'E Chan', enclosed within a faint, light-colored circular stamp or watermark.

Esther Chan  
Licensing Inspector  
Regulatory Services

This page is intentionally left blank

**From:** Esther, Chan <Esther.Chan@brent.gov.uk>  
**Sent:** 17 February 2022 16:02  
**To:** Spyridon Leoussis <sleoussis@nwlsolicitors.co.uk>  
**Cc:** Business Licence <business.licence@brent.gov.uk>; Legister, Linda <Linda.Legister@brent.gov.uk>  
**Subject:** RE: CONSULT: New Premises - Cedar Restaurant, 58 College Road, NW10 5ET - 23607

Dear Spyridon Leoussis,

Thank you for your prompt reply.

I have no further comments and wish to withdraw my representation.

Kind Regards  
Esther Chan  
Licensing Inspector  
Regulatory Services  
Brent Council

---

**From:** Spyridon Leoussis  
**Sent:** 17 February 2022 14:46  
**To:** Esther, Chan  
**Cc:** Business Licence ; Legister, Linda  
**Subject:** RE: CONSULT: New Premises - Cedar Restaurant, 58 College Road, NW10 5ET - 23607

Dear Esther,

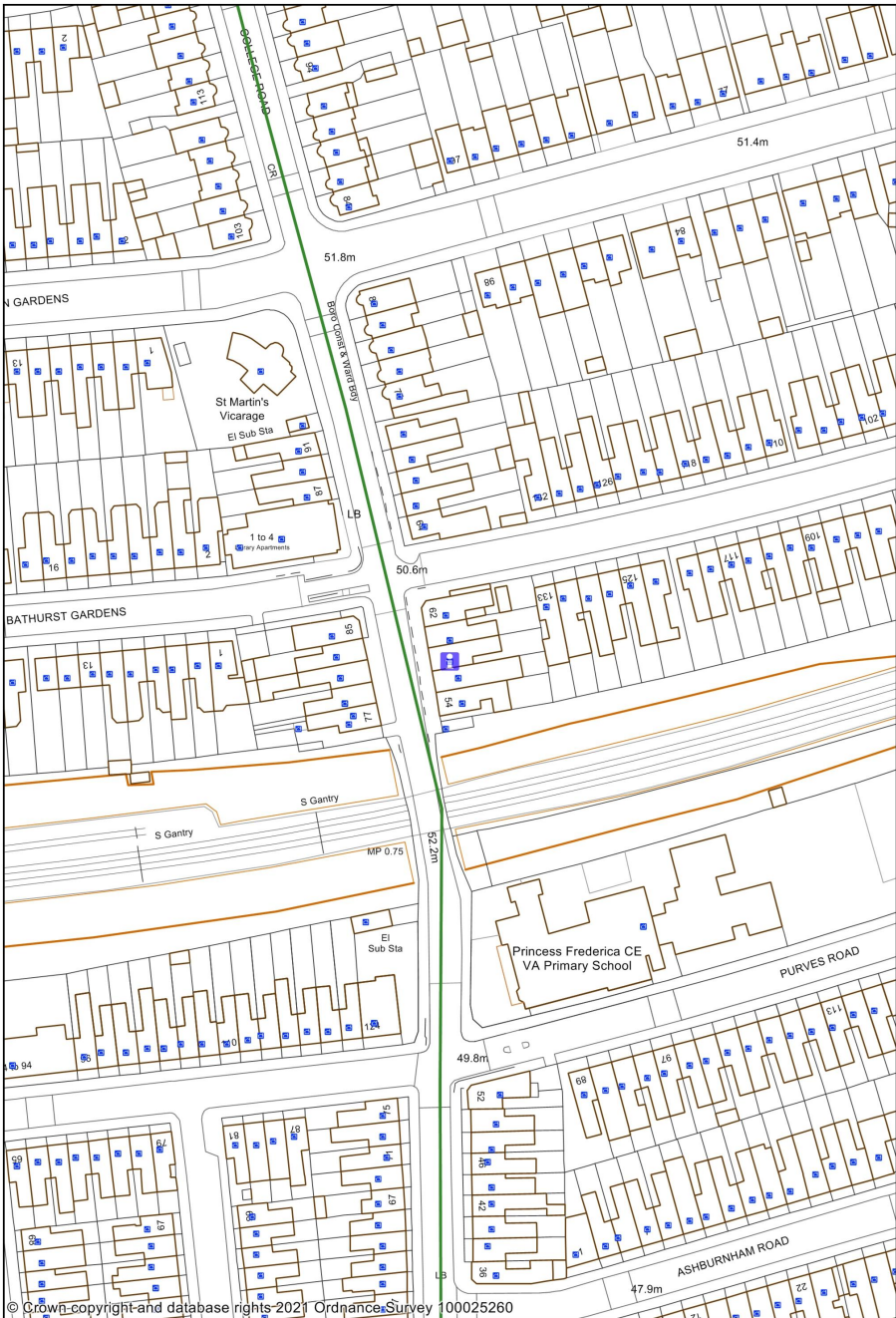
I confirm that my client agrees to all 16 points.

Kind regards,

**Spyridon Leoussis**  
Partner  
**NWL Solicitors**

This page is intentionally left blank

Cedar Restaurant, 58 College Road, NW10 5ET



1:1250

0      0.02      0.04 kilometres

 Brent

This page is intentionally left blank